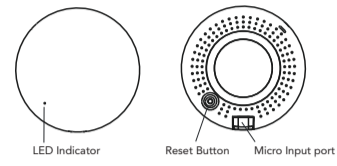


Thank you for choosing our product!

With this device, you can now control all of your IR home appliances such as TVs, air conditioners, TV boxes, lights, fans, and audio systems using a single mobile app. Plus, you can monitor temperature and humidity in real-time, anytime and anywhere.

Please read this user manual carefully before using the device and retain it for future reference.

**Product physical features:**



-2-

**Product Specification**

Size:	Ø 75 x 20 mm
Micro Input:	DC 5V/1A
LED Indicator:	Blue
Infrared Frequency:	38 kHz
Infrared Range:	≤ 12 meters
Wi-Fi Protocol:	2.4 GHz
Wi-Fi Standard:	IEEE 802.11 b/g/n
Temperature	
Measurement Range:	0°C – 60°C
Temperature Accuracy:	±1°C
Humidity	
Measurement Range:	0% RH – 99% RH
Humidity Accuracy:	±5% RH

-3-

**Checklist before using the device:**

- Before using the device, please ensure:
- Your smartphone is connected to a 2.4 GHz Wi-Fi network.
  - The correct Wi-Fi password has been entered.
  - Your smartphone is running Android 4.4+ or iOS 8.0+.
  - Your Wi-Fi router has MAC address filtering disabled.
  - If the number of devices connected to the Wi-Fi router reaches the limit, disconnect a device to free up a channel or try using another router.

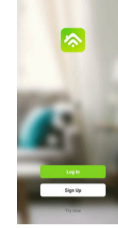
-4-

**How to set up:**

- Scan the QR code below with your smartphone or search for the "Sensbi" app in the Google Play Store or App Store.



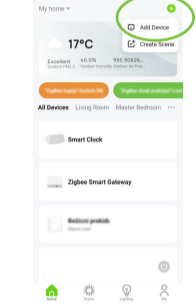
- Download and install the app, then create an account using your e-mail and authentication code.



-5-

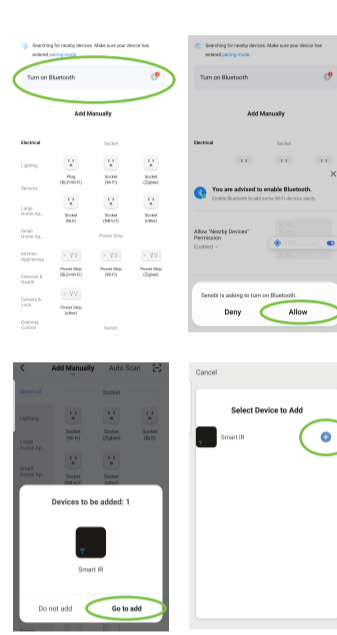
- Connect your smartphone to your Wi-Fi router and power up the remote control using the Micro charging cable. Tap the "+" icon in the top-right corner of the app's homepage or click "Add Device."

Follow one of the three methods below to connect the device:

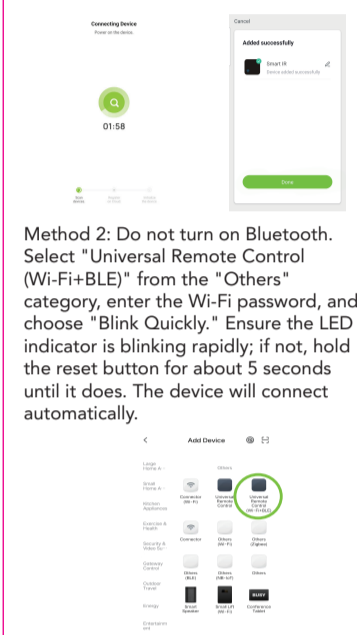


**Method 1:** Turn on Bluetooth on your smartphone. The app will prompt you to enable Bluetooth. Choose the device to add, enter the Wi-Fi name and password, and the device will connect to the network automatically.

-6-

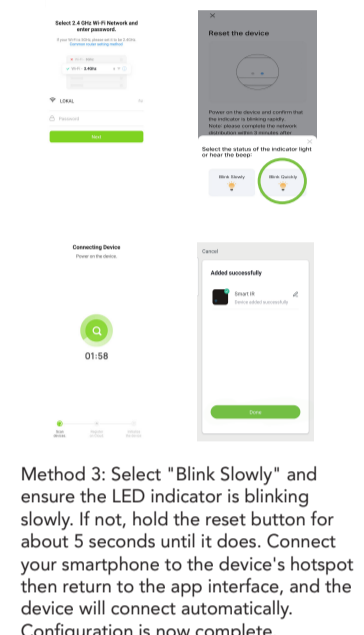


-7-



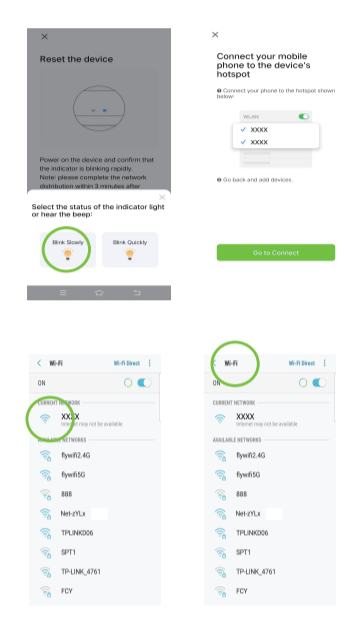
**Method 2:** Do not turn on Bluetooth. Select "Universal Remote Control (Wi-Fi+BLE)" from the "Others" category, enter the Wi-Fi password, and choose "Blink Quickly." Ensure the LED indicator is blinking rapidly; if not, hold the reset button for about 5 seconds until it does. The device will connect automatically.

-8-



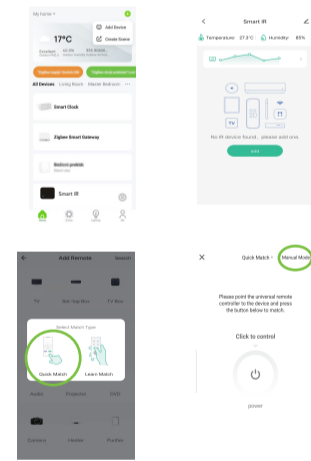
**Method 3:** Select "Blink Slowly" and ensure the LED indicator is blinking slowly. If not, hold the reset button for about 5 seconds until it does. Connect your smartphone to the device's hotspot then return to the app interface, and the device will connect automatically. Configuration is now complete.

-9-



-10-

- To add a device, tap "Smart IR" and then click "Add." Select the device and its brand that you want to control. Click "Manual Mode" to match the buttons. Please match at least 3 buttons to check if the device reacts properly; if so, the match is successful and you can now control the device.



-11-

- To edit the device name, long press the box (Android) or slide the box to the left (iOS) and click "Rename."



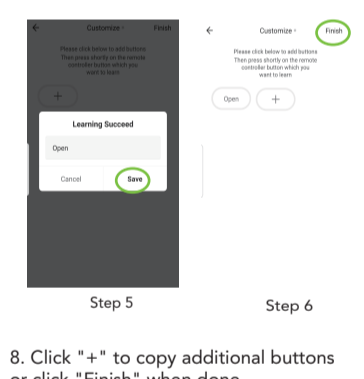
Android iOS

-12-

- If you cannot find the device's brand in the list, choose "DIY" to learn buttons from other brands' remote controls, allowing you to control those devices as well.



-13-



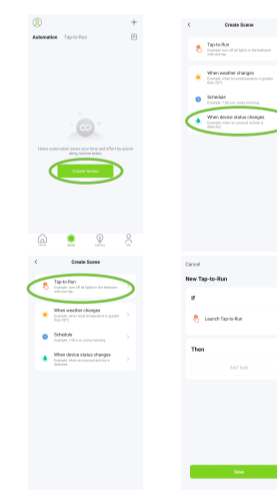
- Click "+" to copy additional buttons or click "Finish" when done.

**Notes:**  
The device only supports 38 kHz frequency. If the IR remote cannot receive commands from the IR device, the frequencies may not match, preventing command learning.  
DIY mode does not support voice control.

-14-

**Functions**

- Customize Scenario**  
Customize Scenario: Create smart scenes for IR devices by clicking "Scene," then "Create scene" to set conditions and tasks.



-15-

**2. Intelligent Linkage**

Execute intelligent linkages based on environmental changes. For example, turn on the air conditioner when the room temperature exceeds 35°C or activate the humidifier when humidity falls below 20% RH.

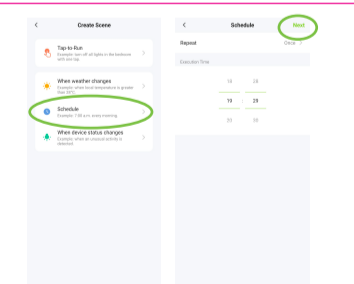
**3. Remote Control**

Remote Control: Control IR devices remotely using the mobile app, anytime and anywhere.

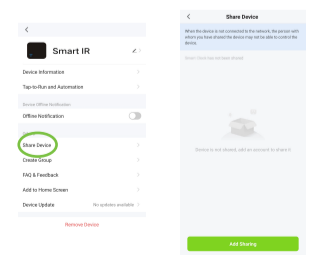
**4. Set Schedule**

In the "Scene" page, select "Tap to Run" or "Automation," tap "+" to choose "Schedule," and set power on/off times.

-16-



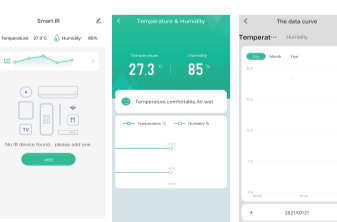
**5. Share Devices:**  
Share added devices with family members so they can also control them.



-17-

**6. Monitor Temperature & Humidity**

About 30 minutes after configuration, the temperature and humidity data on the app will closely reflect the actual environment. View real-time data and records on the app.



-18-

- Third-Party Voice Control**  
The device is compatible with Amazon Alexa and Google Assistant.

**FAQ**

**Which devices can be controlled with the IR remote control?**  
TVs, air conditioners, fans, DVD players, TV boxes, lights, set-top boxes, audio systems, projectors, water heaters, air purifiers, etc.

**When is the temperature and humidity data on the app most accurate?**  
Approximately 30 minutes after configuration, the app will display temperature and humidity data closest to the actual environment. Keep the device away from heat sources.

**What should I do if the device configuration process fails?**  
Check if the IR remote is powered on, ensure your phone is connected to a 2.4 GHz Wi-Fi network, verify network connectivity and Wi-Fi router functionality, and make sure the Wi-Fi password is correct.

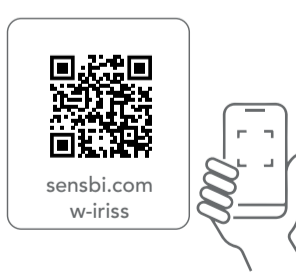
-19-

**Can the IR remote control devices through walls or across different floors?**  
IR signals cannot penetrate walls, so ensure there are no obstacles between the IR remote and the devices.

**What should I do if I cannot use the IR remote to control a device?**  
Check if the IR remote network is in good condition (the indicator light should flash when any button is pressed in the app), ensure there are no obstacles between the remote and the device, and confirm that the device's factory remote control is IR-enabled (if covering the IR remote's top with your hand or an object does not affect the device's response, it may be Bluetooth or RF-based).

-20-

SCAN QR CODE FOR DETAILED INSTRUCTIONS  
SKENIRAJTE QR KOD ZA DETALJNA UPUTSTVA  
SKENIRAJTE QR KOD ZA DETALJNE UPUTE  
ZA PODROBNA NAVODILA SKENIRAJTE QR KODO



This manual applies to wireless infrared controller.  
This manual is for reference only.  
We advise for installation to be performed by professionals. Please see our website for most detailed instructions. www.sensbi.com

-21-